

PHOENIX TITAN TWIN CLEANING INSTRUCTIONS

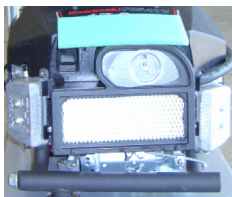


Step 1, dust mop, scrape up gum and labels. For best results, before you start, sweep the dust mop clean and treat with Phoenix Dustrap Mop Treatment. Be sure to shake the soil loose several times while dust mopping.



Step 2, mop spills and heavily soiled areas with Phoenix Solo, mixing per the instructions on the container. Occasionally mop under displays and along the baseboards to keep them 100%.

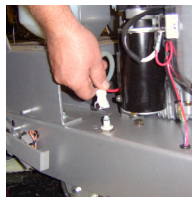
Step 3, spray clean your floors; first prepare your machine:



- a) Check engine filters for cleanliness. Brush or spray out if needed.



- b) Check oil level and add Valvoline 30 weight oil if needed.



- c) Place a one-gallon container of Phoenix Classic Spray Emulsion onto machine. Put a small hole in the front left corner of the bottom to vent. Thread the cap with hose onto the Gallon bottle of Phoenix Classic & connect the inline quick disconnect.



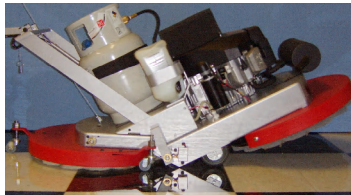
- d) Install a propane tank and strap it into place. Couple the hose onto tank and hand tighten. Open valve, turn counterclockwise to start gas flow.



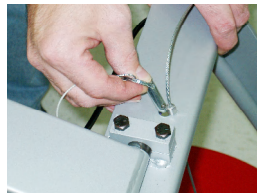
- e) For convenience, prepare a portable product station.



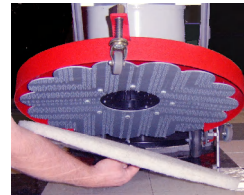
- f) Install the splash guard.



- g) Tilt the front of your machine back and install a new or clean Phoenix Cleaning Pad. Never use a pad that's less than ½" thick. Insure that the pad lock is all the way up so it won't hit the floor during operation.



- h) Tilt the back of your machine back. Latch the cable thru the slot in the lower handle bracket. Secure the safety pin into place.



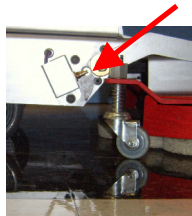
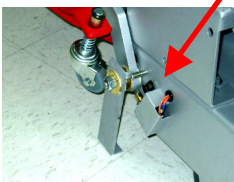
- i) Lift up on the handle to raise the back pad off the floor. Using your foot, swing the kickstand down into place. Install a new or clean Phoenix Polishing Pad. Never use a pad that's less than ½" thick. Insure that the pad lock is all the way up so it won't hit the floor during operation. Slightly lift up on the handle and swing the kickstand back up. Lower back pad onto floor and remove the safety pin and put machine back into operating position.



- j) Turn the key to on (one click) and depress the spray switch to check product flow. If spray tip is plugged, clean out with a thumbtack. Be careful not to enlarge the hole. You are now ready to spray clean.



- k) Turn the key to start the engine, quickly and fully depress the throttle lever. Do not tilt the machine back during operation, the machine will not start or run. Caution: Once the machine is running, keep the machine moving to prevent the pad from burning the floor.



- l) If the machine doesn't start, check to make sure the roller switches are clean and operating properly. (One on each side of the machine.) If the switches are dirty, wipe with a dry cloth or blow out with compressed air. Lube roller with silicone spray only.



- m) To clean/polish floors, start with your left side toward shelving. Clean edges first, staying 3 - 4" away when possible, then finish the middle section.
- n) When cleaning, apply just a little Phoenix Classic with every 4 to 6 steps you take, just quickly tap the spray switch. Best cleaning is at a slower relaxed walk. Stubborn stains and heavier soilage conditions may require more product. To prevent splash guard from streaking, do not spray 3 to 4 steps before a turn.

***Very Important:** In a spray cleaning system, the soil goes into the pads, therefore it is important to change pads often. In normal soil conditions, one cleaning pad change every 4 to 5 minutes is best. Stopping to change a pad only takes a minute to do and can make all the difference in the appearance of your floor. These few extra minutes spent each day changing pads as needed, will reward you with cleaner floors and may eliminate the need for a final dust mopping. For customer convenience, you may find it best to clean/polish your floors in sections. Pads that are used 6 - 7 days a week should be replaced once every 2 - 3 weeks. Worn pads do not perform well.



- a) When you are done running your machine for the day, turn the gas cylinder valve off and let your machine run until it stops. When transporting your machine, lift the rear pad drive and secure it with the safety pin. Remove all propane cylinders from the building and store them outside.
- b) You can do a final dust mopping if you find it is needed. However, in many cases when pads are changed often, it isn't required, or compromise, just sweep the main aisles.

Step 5, Clean up.



- a) Treat all pads with Phoenix Blast Pad Cleaner. Let them set a minute before spraying them out. Power spray with hot water. Once cleaned, hang or place in a pad drying station to dry. Leave a little space between pads for air circulation. If hot water is limited, you may choose to clean each pad right after use, they clean easiest this way.



- b) Brush or spray off the top foam filter bonnet and wipe your machine down with a damp cloth. Run the cloth along the underside ridge of the red machine apron to clean the wax accumulation before it hardens. Use a stiff blade scraper to clean the splash guard. Once a week, clean the carburetor foam filter. You can wash the underside as needed. Store your machine with a pad and splash guard in place to protect the pad holder and spray nozzle tip.

Notes for Winter Conditions:



Phoenix Winterinse should be used in your mop bucket or automatic scrubber to remove heavy salt deposits.